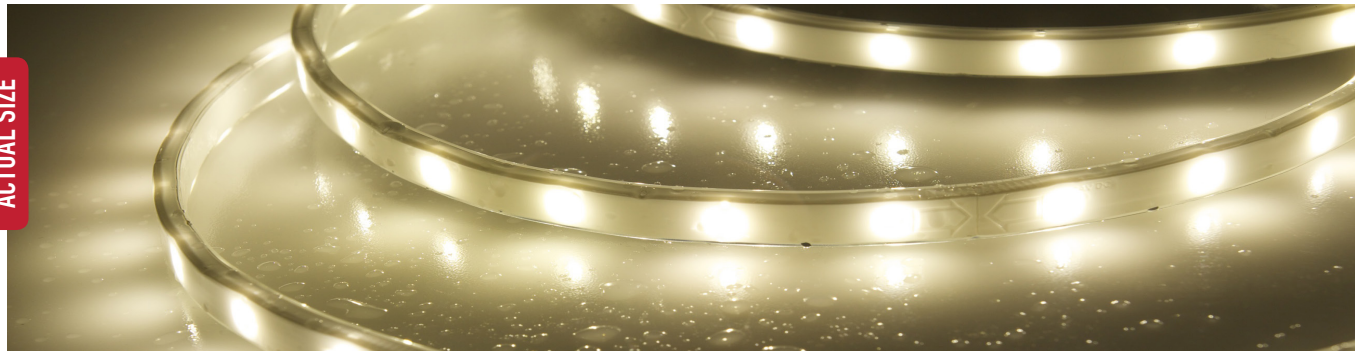


ACTUAL SIZE



HYDROLUME<sup>®</sup> is a fully submersible LED strip light that is UL Listed as an underwater luminaire. Designed for harsh environments, it is completely UV-resistant, saltwater, and chlorine safe yet also perfect for any location. Now you can add brilliant lighting that is durable enough to last in areas exposed to extreme elements. Designed using patented technology, each section is custom assembled to your exact specifications in our California Operations Center to arrive prefinished and ready to install.

ITEM #	CCT (KELVIN)	CRI	LUMENS <sup>1</sup> / FT.
DI-24V-HL35-80-** (STD)	3500K	76	75
DI-24V-HL65-72-** (STD)	6500K	71	82
DI-24V-HLP65-72-** (STD)	Blue	-	53
DI-24V-HLP27-78-** (PLUS)	2700K	78	155
DI-24V-HLP35-80-** (PLUS)	3500K	78	165
DI-24V-HLP65-72-** (PLUS)	6500K	74	144

HYDROLUME is sold in custom lengths up to 81.5 feet (7.08-in. increments). Use the item number format in the chart above to build custom order. Area marked with (\*\*) should be filled with the total amount of 7.08 in. increments. HYDROLUME CUSTOM CUT ORDER FORMS are available at [www.DiodeLED.com/Hydrolume](http://www.DiodeLED.com/Hydrolume)

**Example:** 28.32 inches of HYDROLUME in 3500K = **DI-24V-HL35-80-04**

**Note:** Included end caps add 0.08 in. to the fixture length.  
*Footnote 1 see page 2.*

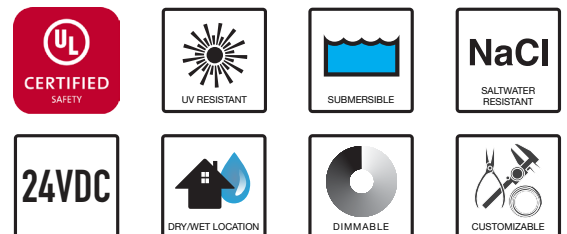
## FEATURES

- UL Listed 2108 certification ensures installations in outdoor and damp applications that is not submerged in water
- UL Listed 676 certification ensures installations in submersible applications such as swimming pools, fountains, natural and artificially made bodies of water
- Fully submersible in fresh and saltwater environments
- Safe for Chlorine treated waters
- Resistant to direct sunlight and UV radiation

## QUICK SPECS

<b>Voltage</b>	24VDC
<b>Wattage</b>	1.13W/ft. HYDROLUME 2.04W/ft. HYDROLUME PLUS
<b>Max. Run</b>	81.5 ft. HYDROLUME 32.6 ft. HYDROLUME PLUS
<b>Dimensions</b>	0.47 x 0.22 in. (W x H) (Strip Only), 0.60 x 0.50 in. (W x H) (w/ Endcap)
<b>Field Cuttable</b>	Non-Cuttable
<b>LED Chips</b>	10/ft.
<b>Certification</b>	UL Listed 2108 & 676 Underwater Luminaire
<b>Warranty</b>	5-Year Warranty

Visit the product page at [www.DiodeLED.com](http://www.DiodeLED.com) for installation guides, .IES files, voltage drop charts, and LM-79 reports.



Item #

Project

© 2018 Elemental LED, Inc. All rights reserved.  
Specifications are subject to change without notice.

## SPECIFICATIONS

- Input: 24VDC Constant Voltage
- Power Consumption / ft.: 1.13W/ft., 0.65W/cut point (HL), 2.04W/ft., 1.2W/cut point (HLP)
- LED Chip Type: CREE 3228 SMD Chip (HL), CREE 3535 SMD Chip (HLP)
- LED Chip Beam Angle: 120°
- LED Chips / ft.: 10
- Material: UV/IR protected TPU
- Dimmable: Yes
- Luminous Efficacy<sup>2</sup> (lm/w): 66~103
- Mounting<sup>3</sup> (sold separately): Stake Bracket, Mounting Bracket, and Mounting Channel
- Field Cuttable: No
- Maximum Run<sup>4</sup>: 81.5 ft. (HL), 32.6 ft. (HLP)
- Connections<sup>5</sup>: Custom length hard-wire lead ranging from 2 in. ~ 45 ft. (HL) and 1 ~ 45 ft. (HLP) Leads: 18/2 AWG UL STJW Hard-Usage Cord
- Ambient Temp<sup>6</sup>: -4 ~ 122°F (-20 ~ 50°C)
- Operating Temp<sup>7</sup>: -4 ~ 176°F (-20 ~ 80°C)
- Flammability<sup>8</sup>: Flame retardant
- Environment: Outdoor / wet location / IP68
- Dimensions: 0.47 x 0.22 in. (W x H) (Strip Only), 0.60 x 0.50 in. (W x H) (w/ Endcap)

## COMPLIANCE & REGULATORY APPROVALS

### Safety

- UL Listed 2108 Low Voltage Lighting System / Low Voltage Luminaire. UL 1598 / CSA 250.0-08, UL 8750. UL 879 / CAN/CSA-C22.2 no. 207-M89. Certified for United States and Canada. File # E469769.
- UL 676 Underwater Luminaires / CAN/CSA C22.2 No. 89-1976 / UL 8750. This certification conforms to Article 680 and 682 of the National Electrical Code® for installation in swimming pools, fountains, spas, natural and artificially made bodies of water. HYDROLUME MUST be installed with Mounting Channel (DI-HL-MTCH) when installed underwater.

### Performance

- LED chip data measured in accordance to IES LM-80-08.
- Photometric & Colorimetry data measured in accordance to IES LM-79-08, in Elemental LED's Innovation Lab.

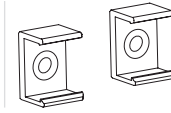
## COMPATIBLE SWITCHES, CONTROLS, LED DRIVERS, & SYSTEM DIAGRAMS CAN BE FOUND AT

[www.DiodeLED.com](http://www.DiodeLED.com)

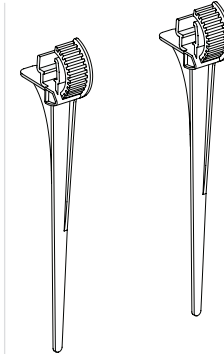
## ADDITIONAL ACCESSORIES

Accessories listed below fully support our HYDROLUME product line. Further information on these products and more accessories can be found in our latest catalog or online at [www.DiodeLED.com](http://www.DiodeLED.com).

HYDROLUME  
Mounting Bracket  
**DI-HL-MTBR**

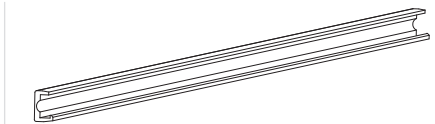


HYDROLUME Stake  
Bracket  
**DI-HL-STBR**



HYDROLUME  
Mounting Channel  
(Length: 39.4in.)

**DI-HL-MTCH**  
*(Required when  
mounting HYDROLUME in  
underwater applications)*

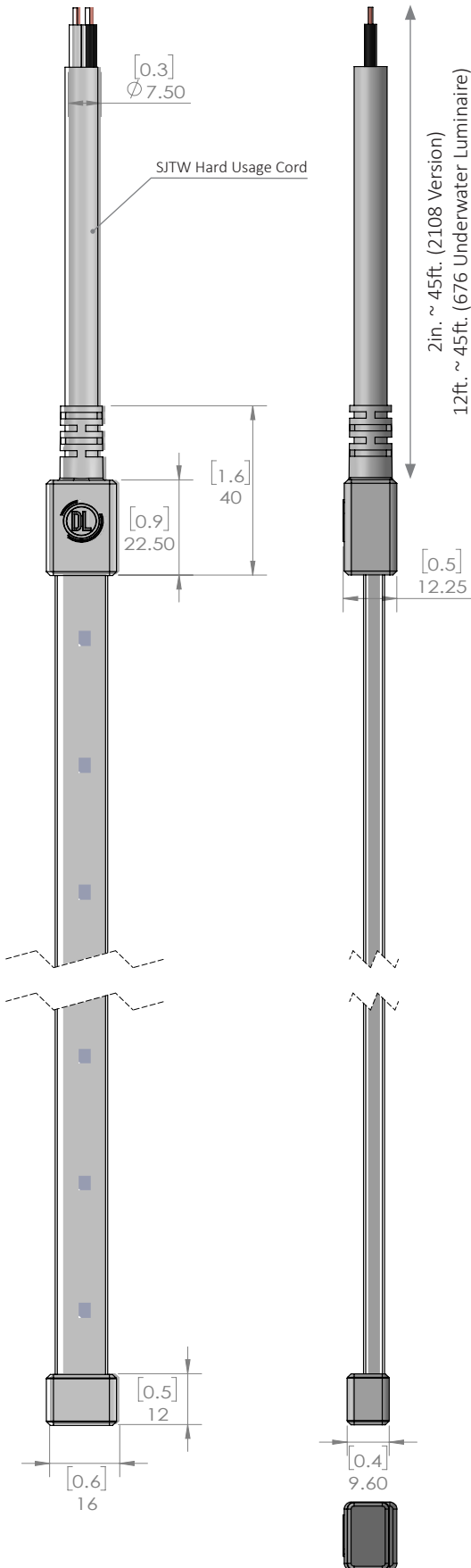


1. Lumen value measured in accordance to IES LM-80-08. LED chips have a luminous flux range with a tolerance of +/- 5%. Each test was performed with a 14.16 in. segment of HYDROLUME (2x 7.08 sections).
2. Actual efficacy value is dependent to specified LED driver (power supply). An estimated efficacy value can be calculated as follows: Lumen value divided by average power consumption per foot.
3. When installed underwater, HYDROLUME must be mounted with the Mounting Channel (DI-HL-MTCH) to retain the UL 676 Listing.
4. Each maximum run requires a dedicated power feed from the driver. Do not extend beyond the recommended maximum run length.
5. UL 676 Model is manufactured with a 12ft. minimum cord length, a requirement of the NEC. Wire leads and accessories are not rated for in-wall installation, however it is suitable to run power cord through conduit and through pool walls. Strip light and leads can be submersed in liquids. ENSURE to make electrical connections OUTSIDE of liquids or in a submersible-compliant electrical enclosure.
6. Do not install product in an environment outside the listed ambient temperature. Exceeding the maximum ambient temperature may damage LED chips, reduce the total lamp life, lumen output, and/or adversely impact color consistency.
7. Operating temperature is measured according to the minimum and maximum ambient temperature environment.
8. This product has been tested and passed glow-wire flammability tests (GWFI index) at 650°C/1200°F, providing an extra level of safety for common areas, hospitality, and areas of high risk fire.

# MECHANICAL DIAGRAMS

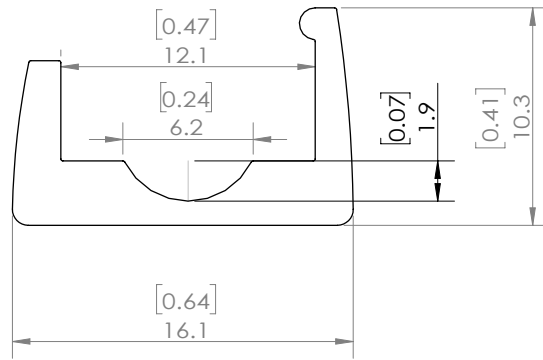
UOM: mm [in.]

## HYDROLUME / HYDROLUME PLUS

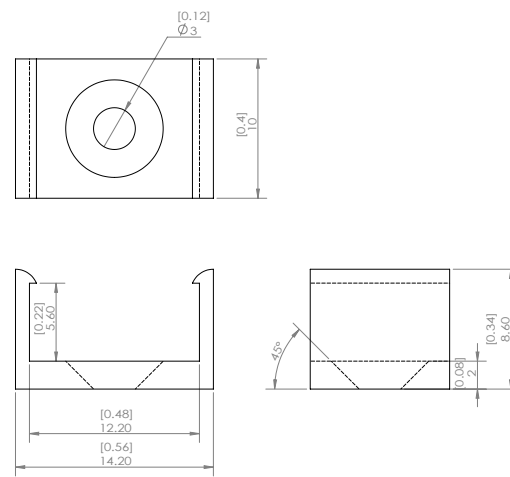


## HYDROLUME MOUNTING CHANNEL

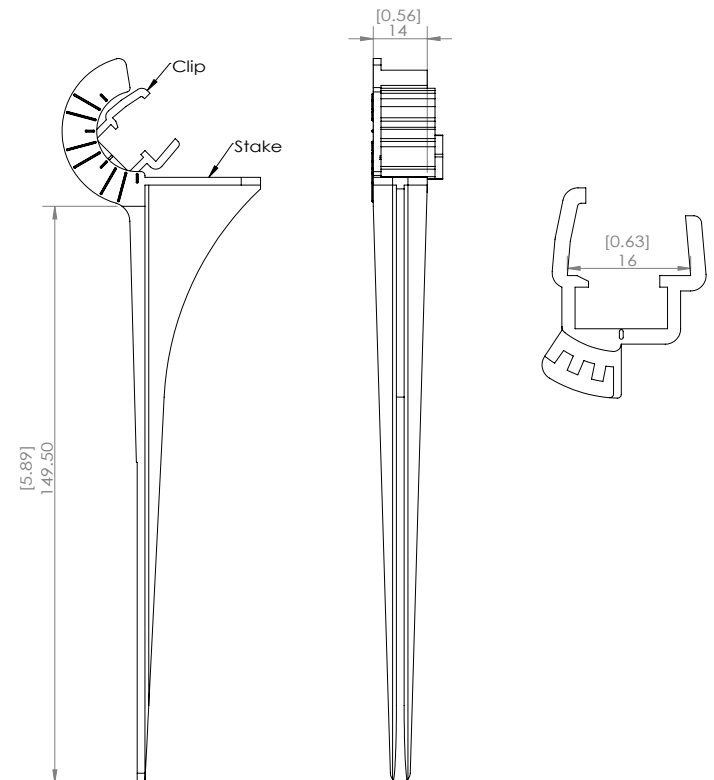
Length: 39.4in.



## HYDROLUME MOUNTING BRACKET



## HYDROLUME STAKE BRACKET



## ADDITIONAL INFORMATION

- HYDROLUME® LED STRIP LIGHT Installation Guide

## SAFETY / WARNINGS / DISCLOSURES

1. Install in accordance with national and local electrical code regulations.
2. This product is intended to be installed and serviced by a qualified, licensed electrician.
3. Only install with a Listed Class 2 DC Constant Voltage LED driver.
4. There are 2 versions of HYDROLUME and HYDROLUME PLUS with UL Listing 2108 or 676. The product label will indicate if Hydrolume is acceptable to install in underwater applications (UL 676 model).
5. When installing UNDERWATER such as pools, spas and fountains, install in accordance with NEC 680 and 682. It is required to mount with HYDROLUME Mounting Channel for these applications.
6. It is not recommended to mount to fiberglass or vinyl pool walls and/or defacing the surface in any way. Always consult your pool supplier and contractor for proper installation of 3rd party products.
7. Strip light and leads are rated as submersible. ENSURE to make electrical connections OUTSIDE of liquid or in a submersible-compliant electrical enclosure.
8. HYDROLUME is NOT rated as field-cuttable. Do not modify or disassemble this product beyond instructions or this warranty will be void.
9. Actual color may vary from what is pictured on this sheet and other print materials due to the limitations of photographic processes.
10. We reserve the right to modify and improve the design of our fixtures without prior notice. We cannot guarantee to match existing installed fixtures for subsequent orders or replacements in regards to product appearance, CCT, or lumen output.

## WARRANTY

### Limited Warranty

This product has a five (5) year limited warranty from the date of shipment. This warranty does not include the additional accessories referenced in this specification sheet. Complete warranty details for fixtures and additional accessories are available at [www.diodeled.com/limited-warranty/](http://www.diodeled.com/limited-warranty/) within the Policies section. For warranty related questions please contact product support.

### Consumer's Acknowledgment

Elemental LED, Inc. stands behind its products when they are used properly and according to our specifications. By purchasing our products, the purchaser agrees and acknowledges that lighting design, configuration and installation is a complex process, wherein seemingly minor factors or changes in layout and infield adjustments can have a significant impact on an entire system. Choosing the correct components is essential. Elemental LED is able to work with the original purchaser to make an appropriate product selection to the extent of the limited information that the customer can provide, but it is virtually impossible for Elemental LED to design a system that foresees every unknown factor. For this reason, this Warranty does not cover problems caused by improper design, configuration or installation issues. Any statement from a Elemental LED employee or agent regarding a customer's bill of goods and/or purchase order is NOT an acknowledgment that the products purchased are designed and configured correctly. The purchase agrees and acknowledges that it is the customer's responsibility to adhere strictly to all information contained in the Product Specification Sheets.

There is often more than one way to design, configure and layout an LED lighting application properly to achieve the same lighting effect. Elemental LED strongly recommends that licensed professionals be used in the design and installation of lighting systems that include Elemental LED products. The specifications include important information that a designer and installer should carefully review and strictly follow. Qualified designers and certified and/or licensed installers, with access to the final installation environment, customer goals, and Elemental LED product specifications can make the requisite decisions appropriate for a successful finished lighting application.



© 2018 Elemental LED, Inc. All rights reserved.  
Specifications are subject to change without notice.

Toll Free: 877.817.6028 | Fax: 415.592.1596 | [www.DiodeLED.com](http://www.DiodeLED.com) | [info@DiodeLED.com](mailto:info@DiodeLED.com)

SPEC SHEET | HYDROLUME® 24V STRIP LIGHT | SS062118-6.0 | 4 OF 4